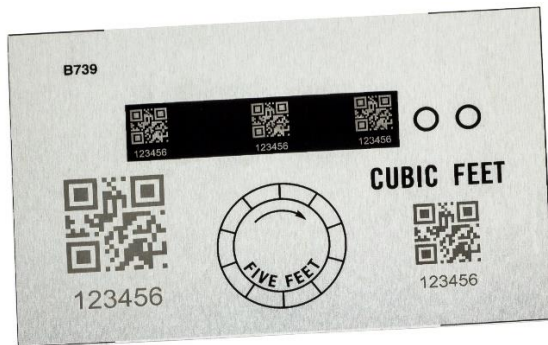


UBI BASIC LASER MARKING SYSTEM

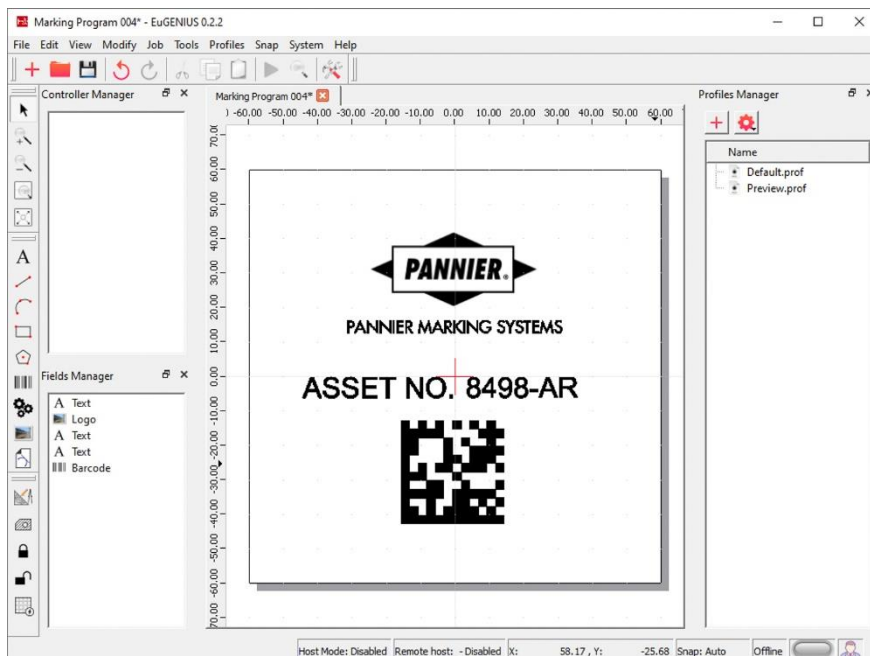


The UBI Basic is a powerful marking system for permanent printing on a variety of materials including metals, plastics, ceramics, and coated surfaces. The UBI uses a fiber laser with a-Wave technology to deliver the marking capability of a laser many times more powerful. The use of galvanometers to direct the beam results in very fast, high resolution marks compared to low-end raster lasers.



SIMPLE & SAFE

The laser resides in a Class 1 enclosure with laser-safe windows. The door's magnetic interlock system ensures it can't be opened during operation. Use the buttons on the control panel to adjust the height of the 7.9" x 7.9" part holding base to accommodate parts of different heights. Internal LED lighting can be turned on to illuminate the work area.



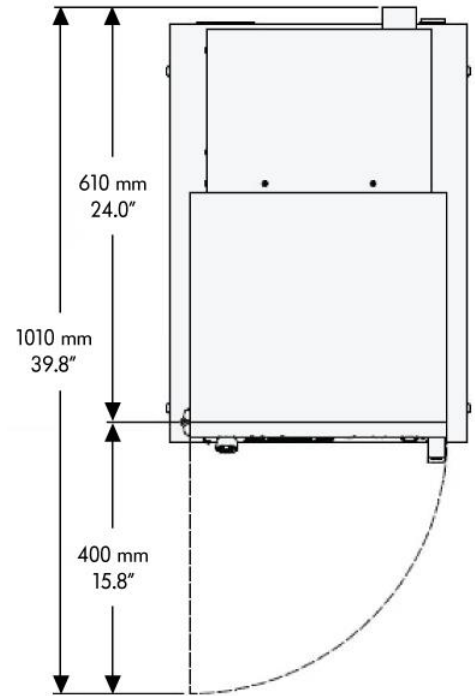
EUGENIUS SOFTWARE

Creating marking formats is easy with the included EuGenius software. Connect your PC to the UBI laser and set up a marking layout in minutes. Add text, bar codes, and graphics, then click and drag elements to move and resize them.

Variable text such as serial numbers and date codes can be set to automatically update or data can be sent from a spreadsheet or other source. Fields can be locked to prevent accidental changes.

SPECIFICATIONS

Laser Type	Ytterbium a-Wave® with auto regulation, air-cooled	
Laser Power	5 W	
MTBF (laser life)	140,000 working hours	
Dimensions W x D x H	17.3" x 26.4" x 27.8"	440 x 670 x 705 mm
Weight	92.5 lbs	42 Kg
Part Holding Base W x D	7.9" x 7.9"	200 x 200 mm
Maximum Part Weight	11 lbs	5 Kg
Marking Window (maximum marking area)	4.33" x 4.33"	110 x 110 mm
Operating Conditions	32° to 100°F 30% to 85% humidity	15° to 39°C
Power Supply	100–120 VAC (or 230 VAC +/- 10%)	
Graphics File Types	Import and mark DXF, JPG, BMP and GIF files	
Fonts	Any TrueType font (TTF)	
Code Symbologies	Code 39, Code 93, Code128, Interleaved 2/5, EAN/UPC, PDF417, Data Matrix, QR	
PC (required, not included)	Windows® 10 min. with one available Ethernet port	



FRONT PANEL CONTROLS

1. **Emergency Stop** button.
2. **Reset** button.
3. **Start Marking** button initiates the current marking format in the EuGenius software.
4. **Voltage Indicator** light turns on if voltage is detected.
5. **Light Switch** turns internal workspace LED lights on/off inside the cabinet.
6. **Free port** for additional controls if required.
7. **Zeta Axis Buttons** raise or lower the part holding base to the correct height (focal distance) for marking.



OPTIONS

- **Dual-beam focus finder** shows when the part is at the correct focal distance (useful when marking different size parts)
- **Metal part/tag detector** prevents the laser from firing if a metal part or tag is not detected in the marking position
- **Mini rotary fixture** for marking around the circumference of small round parts
- **Fume extractor** connects to the built-in exhaust port for air extraction and filtration