

SUPER INK PRINT-ALL



Simple, high quality printing on the production line.

Pannier's Super Ink Print-All flexographic printers print text and graphics on nearly any flat, moving material. With a multitude of configuration options, you can easily integrate printing into your production line and achieve sharp, high quality printed messages on your product. Change messages quickly with interchangeable printing plates and dies.

EASY SETUP & OPERATION

The printer is driven by your material traveling beneath the print wheel, causing it to rotate. No power or air is needed. This allows the printer to automatically adjust to changes in line speed and slight variations in material thickness. A back-up roll beneath the print wheel supports the weight of the printer and creates uniform pressure for consistent printing.

At the end of production, leftover ink is drained from the reservoir and components are wiped clean with the recommended cleaning fluid.

HEAVY DUTY DESIGN

Super Ink Print-All printers are ruggedly built to ensure years of reliable operation. They feature a cast aluminum frame and print wheel, a reverse-angle doctor blade inking system, and precision machined components for excellent performance in demanding applications.

INK SUPPLY OPTIONS

The open ink reservoir can be manually filled by pouring ink from a container or by using a pumping system to maintain consistent ink levels.



Model 9555 SIPA with right-hand drive and #8 E-Z Set print wheel.

A quart bottle feed system is also available. The bottle, featuring a special spill-proof top, is easily replaced when the ink has been depleted.



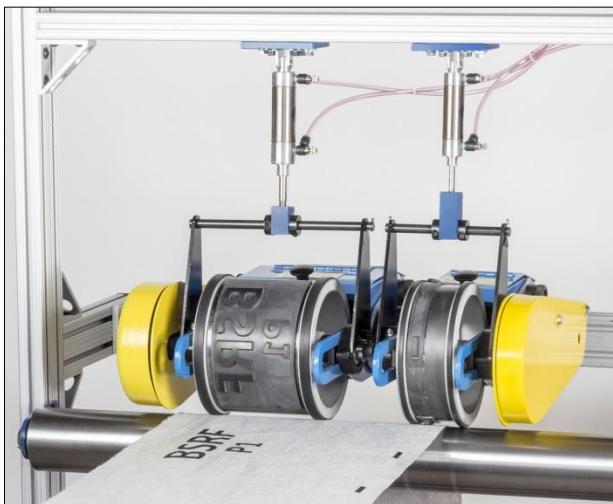
SPECIFICATIONS

Print Width	Model 9555	1/8" to 1-7/8"	3.2 to 47.6 mm
	Model 9670	1/8" to 4-3/4"	3.2 to 120.6 mm
Print Wheel Sizes (max. print length)	#6 wheel	18"	45.7 cm
	#8 wheel	24"	61.0 cm
	#10 wheel	30"	76.2 cm
	#12 wheel	36"	91.4 cm
	Meter wheel	39"	1 m
Maximum Speed	Standard	300 feet/minute	91 meters/minute
	High Speed	575 feet/minute	175 meters/minute
	XHS	700 feet/minute	213 meters/minute
Minimum Speed	Dependent on ink and its dry time		
Mounting Hole	1.01" diameter	25.65 mm	(mount on a 1" diameter bar)
Printer Width	Model 9555	9.03"	22.9 cm
	Model 9670	12.67"	32.2 cm

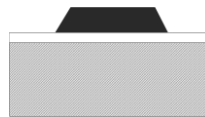
CONFIGURATION OPTIONS

Super Ink Print-Alls can be configured many ways to suit your particular print job and your production line. In addition to several types and sizes of print wheels:

- Printers can be assembled with the drive components on the left-hand or right-hand side of the printer.
- Add a lifting bar and air cylinder kit to raise and lower printers into production.
- Air cylinders and mounts are available for printing on the underside of material or on vertically-oriented material.
- Pannier can design and build mounting structures with backup rolls to suit your needs.

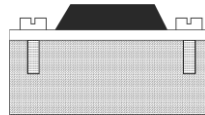


PRINTING PLATE & DIE OPTIONS



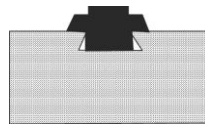
Mounted Printing Plates

Printing plates can be mounted to plastic, magnetic, or steel sheet for quick attachment and removal from the print wheel.



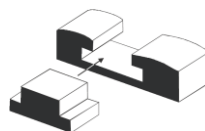
Metal Backed Dies, Screw Mount

Rubber dies bonded to curved metal backing attach to the print wheel with screws.



E-Z Set Dies

Rubber dies molded with a rib on the bottom press into a slot on the print wheel.



Convex Flanged Type

Hard rubber characters slide into individual slots on the print wheel.

SUBMIT AN RFQ

Let Pannier help you build the best printer for your application. Factors to consider:

- type and width of material
- speed and direction of material flow
- desired size of printed message and repeat intervals
- desired location of the printed message on the material
- ink color and performance characteristics
- time available for ink to dry

Pannier Corporation

207 Sandusky Street, Pittsburgh, PA 15212 USA • sales@pannier.com • +1 412.323.4900

www.pannier.com