

PLACA LASER TAG & PLATE MARKER



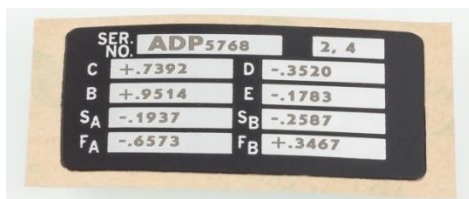
SPECIFICATIONS

Power Supply	100/240V, External 24 VDC (12A) and 5 VDC (6A)
Operating Environment	59 to 95 F / 15 to 35 C 10 to 85% non-condensing humidity
Communications	I/O, RS-232 Serial, Ethernet TCP/IP
Languages	English, Chinese, Japanese, Korean
Code Symbolologies	Code 39, Code 93, Code128, Interleaved 2/5, EAN/UPC, PDF417, Data Matrix, QR
Graphics File Types	DXF, JPG, BMP, and GIF
Fonts	Any TrueType font

PC required; not included.

The PLACA Class 1 laser enclosure is a dedicated system for direct laser marking on tags, plates, and labels. It can be used with a Vanadate or fiber laser for optimal marking quality on your material.

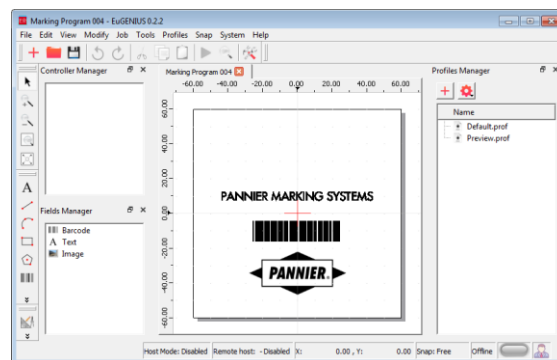
A slide-out drawer with a nesting plate holds a single tag in place during marking, ensuring precise placement. The operator places a tag in the fixture and slides the drawer closed. A safety interlock system prevents the laser from firing if the drawer is not closed completely. The marking process can be viewed through a laser-safe window in the enclosure.



EASY TO USE SOFTWARE

The included EuGENIUS software is easy to use, with a simple drag-and-drop interface. Create text, bar codes, 2D codes, and automatic date code and serial number fields. Graphics can be created with the drawing tools or imported in raster or vector formats.

Variable information for text or bar code fields can be accepted from a host computer, SQL database, text file, or operator input.



Pannier Corporation

207 Sandusky Street, Pittsburgh, PA 15212 USA • sales@pannier.com • +1 412.323.4900

www.pannier.com