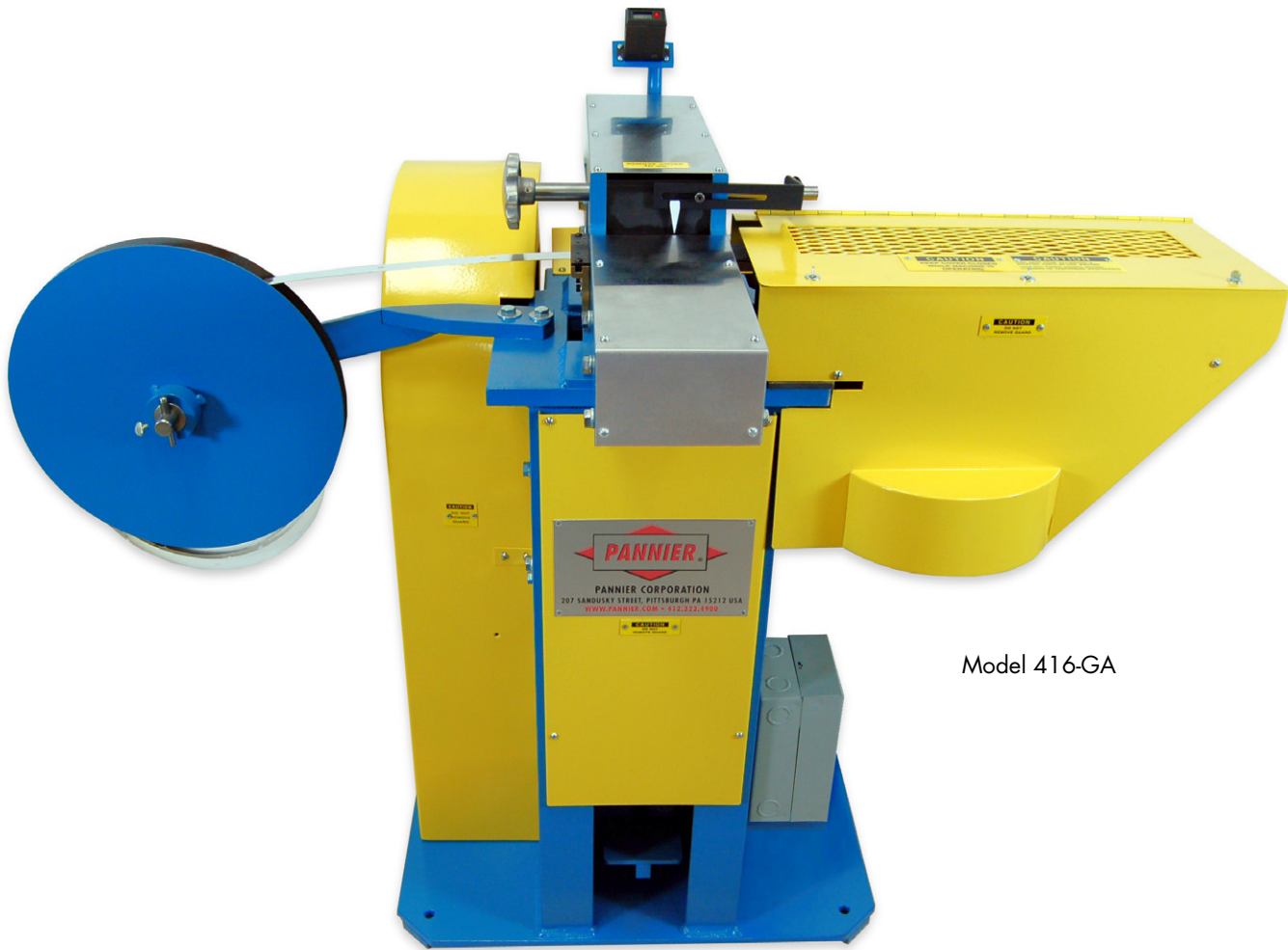




MODEL 416 TAG EMBOSSING MACHINE

TAGGING



Model 416-GA

Tag embosser for high volume, repetitive tag making.

The Model 416 Tag Embossing Machine is designed for embossing one line of text on 1/2" wide or 7/8" wide metal tags. It allows you to easily create large batches of identical tags, serialized tags, or unique tags. Tags are available in various materials, colors, and with or without holes.

The 416 Embossing Machine can emboss one line of up to 20 characters at a time on a blank or pre-embossed 1/2" or 7/8" wide tag. The number of characters is determined by the number and width of the embossing slides in the unit. The operator selects the characters by positioning the embossing slides one at a time until the characters are in the desired sequence. After the characters for the slide reading are selected, the operator presses the foot pedal to emboss the entire legend in one stroke. For serialization, the slides must be manually changed between strokes. Embossing speeds can range up to 60 tags per minute, depending on legend changes.



EMBOSSING TAGS IS AS EASY AS 1 - 2 - 3

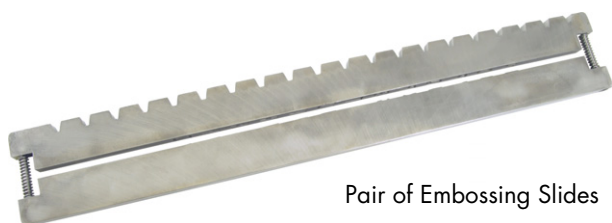
Model 416 Tag Embossing Machines use coiled tags to make embossing fast and easy. You can create a series of tags in just seconds, depending on the requirements of your job.

1. Place a coil of tags on the reel and thread the tag material through the machine until it is in starting position.
2. Select the desired character combination. To change a character, position the slide indicator over the slide to be changed and turn the handwheel until the desired character appears. Move the slide indicator side-to-side in order to change additional characters.
3. Depress the foot pedal to make a tag. All the characters are embossed on the tag in one stroke.



Model 416-B

Model 416-GM



Pair of Embossing Slides

SPECIFICATIONS

Dimensions and Weights	416-B	26 1/4"W x 34 5/8"D x 38 3/4"H	400 lbs	
	416-GM	33 3/4"W x 29 7/8"D x 41 3/4"H	575 lbs	
	416-GA	33 3/4"W x 29 7/8"D x 41 3/4"H	625 lbs	
Power	230/460V, 60 HZ, 3 phase; or 120/230, 60HZ, single phase (other options available)			
Motor	1/2 HP motor			
Tag Materials	aluminum, stainless steel, cold rolled steel, galvanized steel, zinc			
Character Sizes	3/16"	(4.76mm)	9/32"	(7.14mm)
	7/32"	(5.56mm)	5/16"	(7.94mm)
	1/4"	(6.35mm)	3/8"	(9.52mm)
Tag Sizes	1/2" (12.7mm) or 7/8" (22.2mm), length in increments of 1/8" (3.2mm)			
Embossing Area	4" maximum width (standard)			

MODELS

Model 416-B :: This model is a foot operated unit with manual tag feed. Embossing of each tag is done by depressing the kick pedal and hand feeding the next tag into the marking position.

Model 416-GM :: This model is a foot operated unit with manual tag feed. Embossing of each tag is done by activating a mechanical foot pedal and hand feeding the next tag into the marking position.

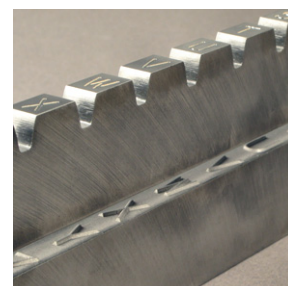
Model 416-GA :: This model is a foot operated unit with an automatic tag feed system. Embossing of each tag is done by activating a mechanical foot pedal, and the next tag is then automatically advanced into the marking position. This will continue as long as the foot pedal is activated.

EMBOSSING SLIDES

Slides are engraved according to the customer's specifications. Up to 15 characters (plus a blank space) can be engraved on each slide. Several slide widths are available to accommodate different character sizes.

SLIDE No. 1 2 3 4 5 6 7 8 9 10 11 12
↓ ↓ ↓ ↓ ↓ ↓ ↓ ↓ ↓ ↓ ↓ ↓

									0			
									1			0
									2			1
									3	0		2
A	0	0		W								
			X									
B	2	2	1	Y	.	1			4	1	3	
				Z	*	2	0	*	5	2	4	
C	3	3	2	A	-	3	1	-	6	3	5	
D	4	4	3	E	/	4	2	/	7	4	6	
E	5	5	4	G	0	5	3	0	8	5	7	
F	6	6	5	H	1	6	4	1	9	6	8	
G	7	7	6	K	2	7	5	2		7	9	
H	8	8	7	M	3	8	6	3		8	A	
I	9	9	8	N	4	9	7	4		9	B	
J	A	A	9	P	5			8	5		A	C
K	B	B	A	Q	A			9	A		B	D
L	C	C	B	S	B				B		C	E
M	D	D	C	T	C				C		D	
N	E	E	D		D				D		E	
O			E		E				E			



Close-up of engraved slide pair.

< Sample Slide Arrangement

PANNIER CORPORATION

207 Sandusky Street • Pittsburgh PA 15212-5823 USA
412-323-4900 tel • 412-323-4962 fax • sales@pannier.com • www.pannier.com