

HR INK JET PRINTERS



INDUSTRIAL MARKING SYSTEMS



HIGH-RESOLUTION THERMAL INK JET PRINTING

The REA-JET HR high resolution thermal ink jet printing system is built on proven HP® printing technology. These industrial grade printers use HP® print cartridges to print continuously on consumer products, industrial products, and packaging.

MAINTENANCE-FREE

Other types of ink jet printers can be complex systems with ink pumps, pressure regulators, filters, and sensitive print heads requiring regular cleaning and calibration. Maintaining these systems requires highly trained maintenance staff or service contracts with outside technicians. Not so with HR printers.

HR printers use easily replaceable HP® print cartridges similar to those used for years in office printers. The HR print head electronically activates the heating elements inside the cartridge to release the ink for printing. So when you change the cartridge, you essentially get a brand new print head.

EASY INTEGRATION

The compact HR print heads and mounting brackets fit into most production lines and machines. Print heads are easily and precisely stacked for larger print heights. The use of a sliding plate guarantees that a distance of 0.5mm is maintained between the cartridge and your product, ensuring optimal print quality and eliminating print smearing or damage to the nozzle plate.

A well thought out range of accessories with many handy components such as mounting brackets, I/O connecting elements, signal lamps, product sensors, and more, enables simple and quick integration.

INK CARTRIDGES

Each HR print head can accommodate a wide variety of ink cartridges formulated for marking porous or non-porous products. Inks are water-based or alcohol-based and suitable for many specialty applications.

- cardboard
- coated cardstock
- fabrics
- metals
- poly plastics
- PVC plastics
- wood

EXCELLENT PRINT QUALITY

Print resolution of up to 600 DPI can be accomplished, depending on print speed. Text, graphics, bar codes, and 2D codes are rendered using a variety of inks formulated for a good balance of print density and fast drying time, even at high speeds.

ENVIRONMENTALLY FRIENDLY

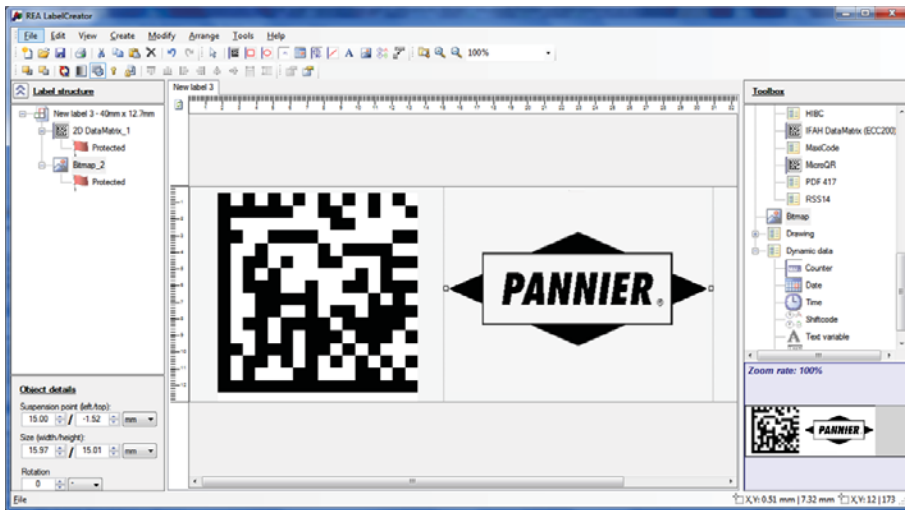
- Odor-free, mess-free inks
- No complex fluid systems to manage
- Cartridges are easy to change and dispose of – no ink spills



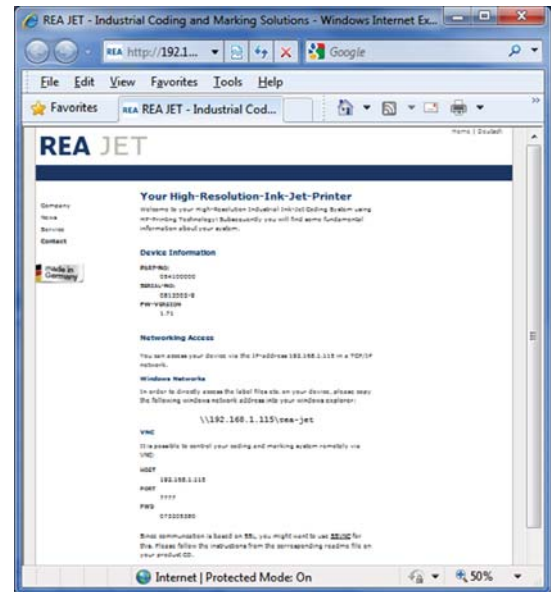
Ink cartridges are equipped with smart chips to allow monitoring of remaining ink volume, even after a cartridge has been removed and reinstalled.

In addition, the operator can view the type of ink cartridge currently installed, the number of prints the cartridge can complete using the current print job, and the amount of ink used per print.

PROGRAMMING AND COMMUNICATION



Printing formats are created in the included LabelCreator software.



Remote programming and operation can be accomplished with the integrated web server on any standard web browser. Each printer is assigned its own IP address.

- Ethernet TCP/IP or serial communication
- USB port for file transfer, firmware updates, and barcode scanner connection
- Integrated FTP for automatic data transfer from a host system
- Support of TrueType Fonts (TTF) and the Unicode character set
- Web server and user interface available in 20 languages

CONTROLLERS

All HR controllers feature a sturdy stainless steel housing, full-color LED screen, intuitive graphical interface, and rotary dial control for menu navigation and selection.



CONTROLLERS	HR 2K	HR 4K	HR 2K pro	HR 4K pro
Description	<ul style="list-style-type: none"> • Full-color 5.7" LED display • Membrane covered keypad 		<ul style="list-style-type: none"> • Full-color 3.5" LED display • Suitable for control panel integration 	
Maximum Attachable Print Heads	2	4	2	4
Maximum Overall Marking Height (1/2" per head)	1"	2"	1"	2"
Ingress Protection (IP) Rating	IP65	IP65	IP20	IP20
Digital Input/Outputs (24V DC)	6 inputs, 4 outputs	12 inputs, 8 outputs	6 inputs, 4 outputs	12 inputs, 8 outputs
Electric Supply	95V to 250V AC, 50 – 60 Hz			
Dimensions (L x W x H)	12.2" x 11.3" x 5.6" 308 x 287 x 142mm	14" x 11.3" x 5.6" 355 x 287 x 142mm	10.4" x 6.9" x 3.9" 265 x 176 x 100mm	13.8" x 6.9" x 3.9" 350 x 176 x 100mm
Weight	22 lbs / 10 kg	20 lbs / 9,1 kg	9 lbs / 4,1 kg	17.6 lbs / 8 kg



PANNIER CORPORATION

207 Sandusky Street

Pittsburgh, PA 15212 USA

+1 412.323.4900 Tel

+1 412.323.4962 Fax

sales@pannier.com

www.pannier.com