

# EMBOSSMAX 5000

Fully automated metal tag embossing system.



The EmbossMax 5000 is a high volume, automatic metal tag embosser designed for reliable operation in manufacturing environments. It can produce hundreds of tags at a time with little or no operator intervention.

The raised characters on the tags remain legible after harsh manufacturing processes and years of outdoor exposure, ensuring intact product identification for the life of the product.

## MAXIMUM VERSATILITY

EmbossMax systems use a programmable carbide marking pin to mark text, logos, and 2D codes in any orientation on metal tags.

- Unlimited character size and font options
- Emboss, deboss, or engrave characters
- Adjustable marking depth

## TROUBLE-FREE OPERATION

Coils of up to 1,000 pre-formed tags feed continuously through the embosser, after which they can be snapped apart for immediate use or recoiled on an optional tag recoiler. The tag stock moves freely through the embosser, ensuring that the tags will not jam and components cannot be knocked out of alignment.

Connect the system to your network and use remote access options for system monitoring, tag format changes, and remote operation.

## FOOL-PROOF DATA ENTRY

The EmbossMax is a complete production system ready for integration in your manufacturing operations. The included software can accept data from a variety of sources including ASCII files from a host computer, databases, CSV files, and manual data entry. Job data from any source is verified for accuracy then enters the job queue.

- Sophisticated data error checking
- Automatic field sequencing
- Easily create duplicate tags



Process Tracking Tags	Product Labeling
<ul style="list-style-type: none"> <li>• Aggressive Cleaning</li> <li>• Galvanizing</li> <li>• High Heat</li> <li>• Painting &amp; Coating</li> <li>• Container Tracking</li> <li>• In-Mold Part Numbering</li> </ul>	<ul style="list-style-type: none"> <li>• Assets</li> <li>• Serial &amp; VIN Tags</li> <li>• Horticulture</li> <li>• Hoses &amp; Cables</li> <li>• Utility Poles</li> <li>• Valves &amp; Pipes</li> </ul>

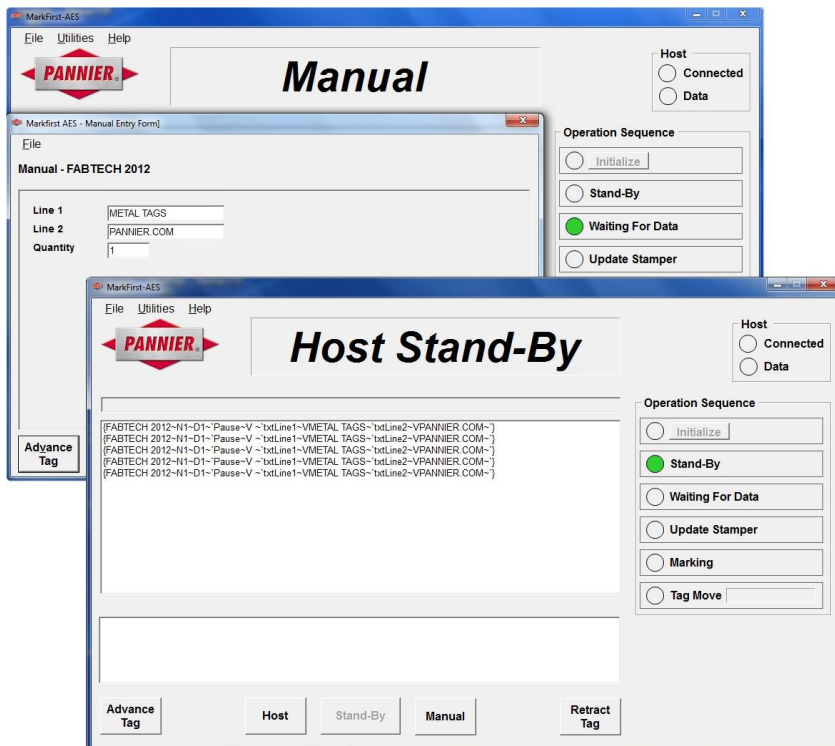
## SPECIFICATIONS

Standard Tag Widths	1/2", 7/8", 2", 3"	12.7, 22, 51, 62 mm
Tag Thickness	.008" to .018"	.2 to .46 mm
Dimensions (H x W x D)	33.3" x 36.5" x 18" (fits a 29" x 18" table)	84.6 x 92.7 x 45.7 cm (fits a 74 x 46 cm table)
Weight	160 lbs (not including PC )	72 kg (not including PC )
Power Supply	120 VAC or 215-240 VAC, 50-60 Hz	
Air Supply	100 psi (7 bar), clean, dry, and oil-free, 1 CFM	
Communication Methods	Ethernet TCP/IP, RS-232 Serial, file import, file transfer, manual data entry, custom interfaces	

## SOFTWARE

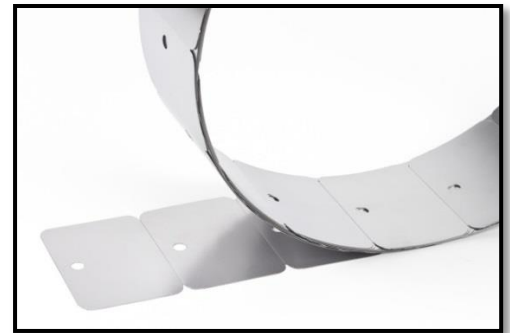
The EmbossMax software can be operated in manual data entry or host communication mode. New tag data that has been verified enters the job queue, while bad data streams are quarantined in a separate queue. Double-click a bad data stream to view detailed error information.

If marking is paused, data streams can continue being added to the queue. Marking will automatically continue once the system is placed back online.



## TAG OPTIONS

Pannier manufactures metal tags in a wide variety of materials, sizes and configurations to suit our customers' unique requirements.



## Typical Materials

- Aluminum
- Cold-rolled steel
- Electro-galvanized steel
- Stainless steel

## Attachment Options

- One or more holes
- One or two slots
- Adhesive backing

## Tag Styles

- Rectangular
- Tongue & slot
- Cable tags with raised slots



**Pannier Corporation**  
 207 Sandusky Street  
 Pittsburgh, PA 15212 USA  
[sales@pannier.com](http://sales@pannier.com)  
 +1 412.323.4900

## INDUSTRIAL MARKING SYSTEMS SINCE 1899

- Dot Peen Systems
- Ink Jet and Flexographic Printers
- Laser Marking Systems
- Steel Hand Stamps & Marking Dies
- Tags, Labels, and Printers