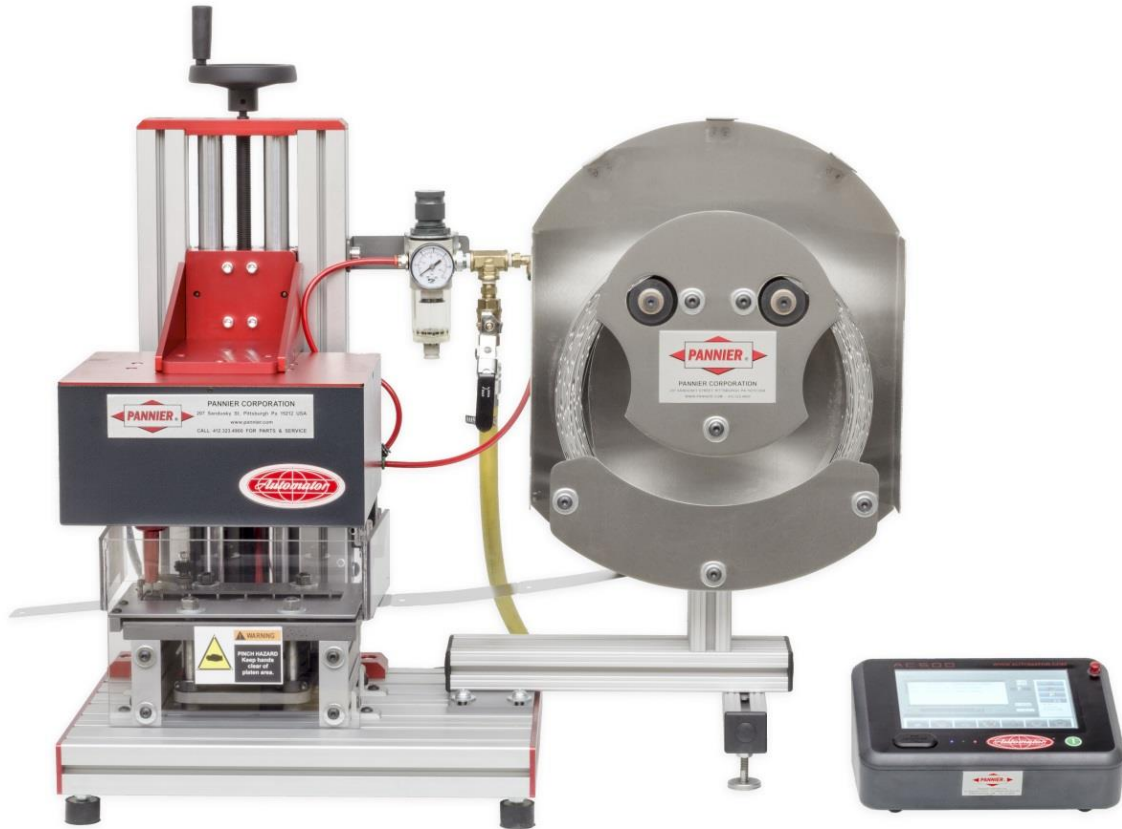


# EMBOSSMAX 3000

Programmable metal tag embossing system.



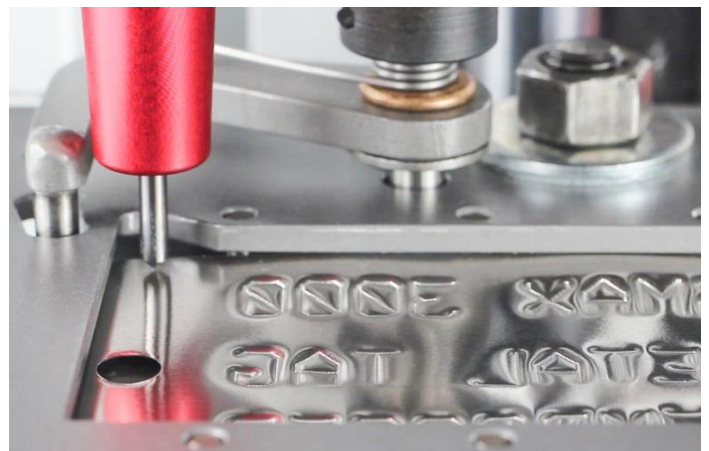
The Pannier EmbossMax 3000 metal tag embosser uses dot peen marking technology to create high quality embossed metal tags. The touchscreen controller makes jobs easy to program and preview on the screen.

Coils of pre-fabricated metal tags feed easily through the marking station. The tags are held with a clamp during marking, after which the clamp releases and the operator advances the stock to the next blank tag.

## MAXIMUM VERSATILITY

EmbossMax systems use a programmable carbide pin to mark text, logos, and 2D codes in any orientation on metal tags.

- Unlimited character size and font options
- Emboss, deboss, or engrave characters
- Adjustable marking depth
- Automatic serialization and date coding

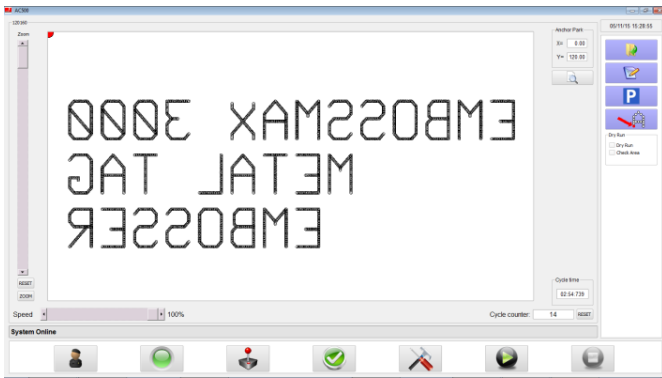


## SPECIFICATIONS

Standard Tag Widths	1/2", 7/8", 2", 3"	12.7, 22, 51, 62 mm
Tag Thickness	.008" to .018"	.2 to .46 mm
Dimensions (H x W x D)	25" x 27" x 14" (not including controller)	63.5 x 68.8 x 35.6 cm (not including controller)
Weight	96 lbs	43.5 kg
Power Supply	120 VAC, 60 Hz	
Air Supply	100 psi (7 bar), clean, dry, and oil-free, 1 CFM	
Communication Methods	Ethernet TCP/IP, RS-232 Serial, file import, file transfer, manual data entry, custom interfaces	

## EASY DATA ENTRY

Setting up new tag formats is fast and easy with the included AC500 touchscreen controller. Create the fields to be marked and go to the preview screen to see the layout of the fields and to move and resize them. The controller can store thousands of unique formats.

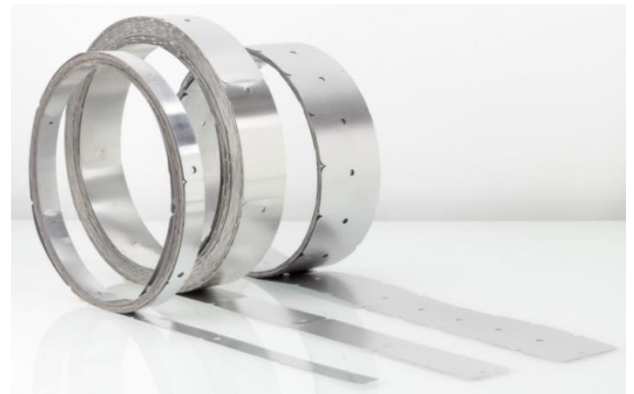


Once a tag format is set up, variable information can be entered a variety of ways. Typical data entry methods are:

- 1** Manual data entry using the touchscreen or an attached keyboard. Tag formats can include serial number or date, time, and shift fields that automatically update.
- 2** Connect a USB bar code reader and scan bar codes on production paperwork.
- 3** Send data from a spreadsheet on a connected PC using the **Pannier Simple Spreadsheet App**.

## TAG MATERIALS

Pannier manufactures metal tags in a wide variety of materials, sizes and configurations to suit our customers' unique requirements.



### Materials

Aluminum  
Cold-rolled steel  
Electro-galvanized steel  
Stainless steel

### Attachment Options

One or more holes  
One or two slots  
Adhesive backing

### Tag Styles

Rectangular  
Tongue & slot



[www.pannier.com](http://www.pannier.com)

### Pannier Corporation

207 Sandusky Street  
Pittsburgh, PA 15212 USA  
[sales@pannier.com](mailto:sales@pannier.com)  
+1 412.323.4900

### INDUSTRIAL MARKING SYSTEMS SINCE 1899

Dot Peen Systems  
Ink Jet and Flexographic Printers  
Laser Marking Systems  
Steel Hand Stamps & Marking Dies  
Tags, Labels, and Printers