

REA JET CL MARKING LASERS

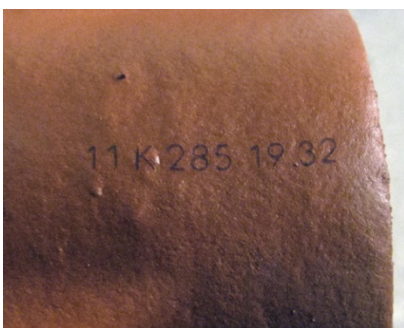
Robust design and internet-ready controls for easy integration.



Branding and product information on extruded plastic profiles.



2D code marking on tire sidewalls.



Coding ceramic roof tiles.

REA JET CL CO₂ laser marking systems are designed for easy integration into production lines and automation cells with their sturdy housings and graphical, internet-ready controls.

Worry-free Marking

CL lasers make fast, consistent marks on many types of materials on the production line, including plastics, ceramics, rubber, paper and fiber products. With no inks or other consumables needed, lasers offer a low total cost of ownership and require no maintenance.

Modern Controls

Working with CL laser marking systems is simple and intuitive. The controller features a color graphical operating panel and rotary pushbutton knob for easy menu navigation and job selection.

Easy Production Integration

The compact design and rotating marking head of the REA JET CL allow for simple mechanical integration. Optional beam turning units enable use in places that may otherwise be difficult to access. New generation digital beam deflecting mirrors provide the highest possible operating speed, with ample capability in reserve.

A pilot laser allows the operator to visually set the desired mark location during setup for quick creation of new marking jobs.

Remote Setup & Diagnostics

Remote operation, maintenance, and training on the REA JET CL controller can be accomplished from a remote PC using the integrated VNC server. Settings and diagnostics are accessible from any web browser; there is no need to install separate software. The remote maintenance tool for remote diagnostics and support is included in delivery.

TYPICAL MARKING APPLICATIONS

CL lasers can be used for marking individual or continuous products on the production line with its mark-on-the-fly (MOTF) capability. Some common laser marking uses:

- Engraving on plastics, color marking on PVC, engraving on headlight reflectors in the automotive industry
- Cardboard packaging for food, pharmaceutical, cosmetics, and other consumer products
- Glass marking (vehicle, lab, bottles, lifestyle products)
- Wood (packaging, ice cream sticks, furniture, laminates)
- Layered substrates, such as anodized aluminum
- Direct marking of foodstuffs

SPECIFICATIONS

Laser Type	Air-cooled CO ₂ laser with integrated pilot laser
Power Supply	95-250 VAC (autorange) 50/60 Hz
Emergent Beam Angle	Continuously adjustable
Communication	Ethernet, RS-232/422, USB
Digital I/Os	2x 6 inputs, 2x 4 outputs, freely configurable
Safety	Dual-channel safety circuit interlock
Maximum Line Speed	1,000 meters/minute 3,280 feet/minute
Laser-Controller Cables	Detachable; available in four lengths up to 10 meters / 33 feet long
Controller Dimensions L x W x H	329 x 424 x 142 mm 13" x 16.7" x 5.6"
Display	5.7" hi-res graphics display; 6 LEDs for direct display
Languages	Multi-language support, freely selectable
Fonts	Laser-optimized fonts, TrueType fonts, custom fonts
Message Content	<ul style="list-style-type: none"> • Single-line text, multi-line text with word wrapping • Dynamic text including date, shift, time, and serial codes • Bar codes and 2D codes including input wizard for GS1 and other standards • Logos and graphical shapes

Laser Head	CL210	CL230	CL260
Maximum Power	10 Watt	30 Watt	60 Watt
Wavelength (microns)	10.6 µm (9.3 µm at 8 W)	10.6 µm (10.2 µm at 25 W) (9.3 µm at 20 W)	10.6 µm
Dimensions L x W x H	787 x 137 x 180 mm 31" x 5.4" x 7.1"	787 x 137 x 180 mm 31" x 5.4" x 7.1"	898 x 137 x 180 mm 35.4" x 5.4" x 7.1"
Weight	14 kg 31 lbs	18 kg 40 lbs	25 kg 55 lbs
IP65 Version Dimensions L x W x H	817 x 142 x 192 mm 32.2" x 5.6" x 7.6"		
IP65 Version Weight	15 kg 33 lbs	19 kg 42 lbs	26 kg 57 lbs

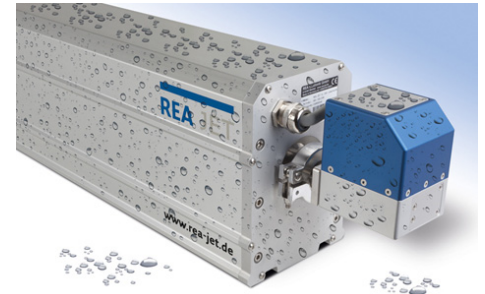
Lens	100	150	200	250	300
Distance From Lens to Product Surface	100 mm 3.9"	150 mm 5.9"	200 mm 7.8"	250 mm 9.8"	300 mm 11.8"
Marking Area L* and H (mm/inches ²)	80 mm 3.1"	120 mm 4.7"	160 mm 6.3"	205 mm 8.1"	250 mm 9.8"

* Unlimited message length when marking moving products.

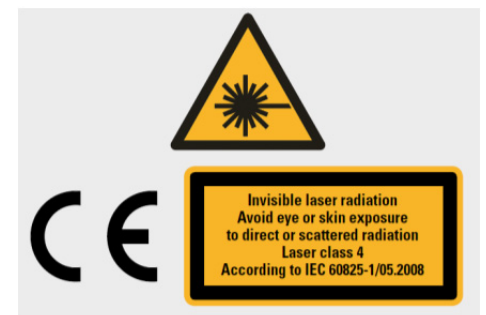
ACCESSORIES

Beam Deflection and Lengthener Kits
 Product Sensors
 Production Speed Encoders
 Fume Extraction & Filtration Units
 I/O Kits for DIN Rail Mounting
 Safety Kits
 Signal Lights
 Fan Covers for Dust & Splash Protection
 External Cooling Units for IP65 Systems
 Finline Option for Increased Resolution

IP65 PROTECTION



Laser heads are available with IP65 rated air-cooled cabinets for protection from humidity, splashes, and dirt in rough production environments.



Pannier Corporation
 207 Sandusky Street
 Pittsburgh, PA 15212 USA
sales@pannier.com
 +1 412.323.4900

INDUSTRIAL MARKING SYSTEMS SINCE 1899

Dot Peen Systems
 Ink Jet and Flexographic Printers
 Laser Marking Systems
 Steel Hand Stamps & Marking Dies
 Tags, Labels, and Printers