



ADP120160D DEEP MARKER

INDENTING



Automatic Deep Marking

The ADP120160D Deep Marker uses a heavy-duty carbide marking pin to create ultra-deep marks in metal surfaces that remain visible even after painting and galvanizing. The Deep Marker can be used as a portable, benchtop, or inline marking system to fully automate the marking process, eliminating marking errors and worker injuries.

- Fast and easy to program with the touchscreen controller; no PC needed
- Mark one or more lines of text, graphics, and 2D codes within the 120mm x 160mm marking window
- Controller stores hundreds of marking jobs for a multitude of marking tasks
- Automatically serialize and date code parts or send data from a host system or bar code scanner



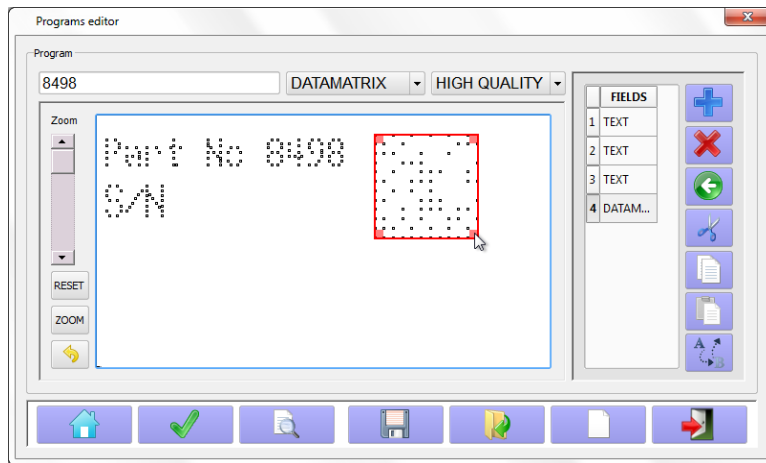
Sample marks shown after a layer of paint.

EASY PROGRAMMING WITH THE AC500 CONTROLLER

Create marking patterns step-by-step with fields containing text, lines, shapes, serial numbers, date/time codes, shift codes, .dxf files, and 2D codes. Patterns can also use variable data entered by the operator, retrieved from a lookup table, or obtained from a bar code scanner, host computer, or other external device.



The preview screen (below) shows how your pattern will look when it's marked – click and drag fields to move and resize them for precise placement. Once your pattern is complete, use the Check Area and Dry Run options to ensure that the entire message fits within the marking area and to watch the stylus move through the entire pattern without actually marking the part.



- The AC500 software can also be installed on any PC for programming at your desk, then transfer files to the controller with a USB flash drive.
- Define custom date codes, shift codes, and universal or pattern-specific serial numbers.
- Set passwords for supervisor or maintenance level access to prevent users from making unwanted changes.

SPECIFICATIONS

Marking Window	120mm x 160mm (4.7" x 6.3")
Electric Supply	90–250 VAC / 50–60 Hz
Air Supply	60–120 PSI, clean and dry
Operating Environment	Humidity: 10 – 80% non-condensing Temperature: 32°F – 115°F
Interface	RS-232/485, Ethernet TCP/IP, I/O, USB
Input/Output	12 input signals (6 dedicated) 6 output signals (2 dedicated)
Memory	64 MB internal flash memory
Languages	English, French, Spanish (others available)
Fonts	5x7, 11x16, OCR, 11x16 CH, AHSA, 2D Data Matrix, TrueType fonts
Character Sizes	1.5mm high to maximum of window



Benchtop marking system.



Portable marking head with electromagnets.

PANNIER CORPORATION

207 Sandusky Street • Pittsburgh PA 15212-5823 USA
412-323-4900 tel • 412-323-4962 fax • sales@pannier.com • www.pannier.com