



# AC250 CONTROLLER



## Dot peen controller for repetitive marking tasks.

The AC250 Controller is a simple, economical controller that can be connected to any size ADP dot peen marking head. Designed for basic marking tasks, the easy-to-use controller allows an operator to choose from eight stored marking patterns while protecting those patterns from unwanted changes.

A PC is required for initial marking pattern setup and programming using the included software. Once patterns are loaded onto the controller, it can operate in a stand-alone fashion or remain connected to a PC for operation via an Ethernet cable. Marking patterns can also be loaded onto the controller via the USB port.

The AC250 is ideal for simple part marking jobs, such as:

- Marking your company name and logo for branding
- Automatic serialization – serial numbers automatically increment with each marking cycle
- Automatic date coding
- Repetitive part numbering

Marking patterns are stored in the controller's internal flash memory, ensuring that the marking pattern data is preserved even if power is lost.

**START** **STOP** Start and stop the marking cycle. Can also be controlled via RS-232.

**-** **+** Select one of eight stored marking patterns.

**FUNC** Enables multiple functions to position and test patterns prior to marking.



Create marking patterns with text, logos, and 2D Data Matrix codes quickly and easily with the AC250 software.

## VERSATILITY

Operate the markers in three different marking modes with your choice of marking pin assembly for a variety of marking tasks.

**Dot Mode** – Synchronous dot peen marking mode moves the stylus to a precise location and then extends the stylus to mark each dot. Extremely accurate dot placement for high quality, deep marks and 2D Data Matrix codes.

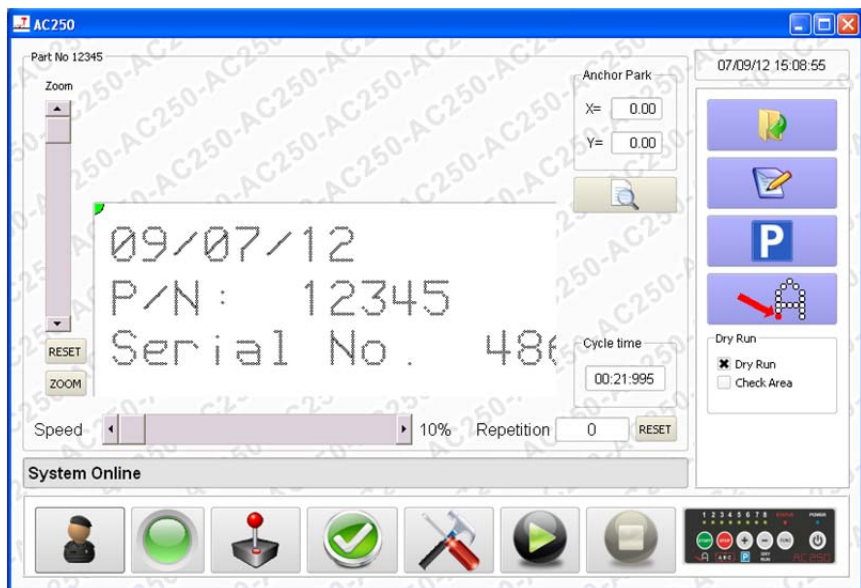
**Continuous Mode** – Asynchronous dot peen marking mode where the stylus moves up and down continuously while it moves through the marking pattern. For fast, deep marking.

**Vibropeen Mode** – The vibropeen stylus vibrates constantly for high-quality engraving. Very fast, light marking.

## EASY PROGRAMMING

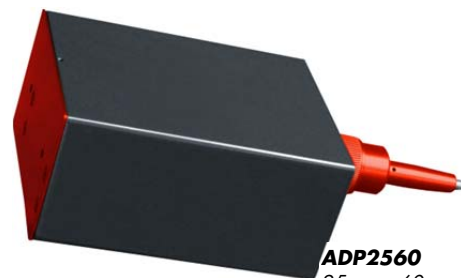
Create marking jobs in a few minutes and use the built-in error checking features to make sure you've got it right. In a new marking pattern, fields are added step-by-step using text, lines, shapes, serial numbers, date and time codes, .bmp and .dxf files, and 2D codes.

Once a pattern is programmed and saved, the entire pattern can be previewed on the screen. In preview mode, each field can be resized or repositioned for easy editing. Total cycle time for marking the pattern is displayed in this screen, and marking speed can be adjusted with a slider to fine tune the mark quality.



Use the Check Area option to see the marking pin move around the perimeter of the pattern you've created. You can also simulate the marking of a pattern by activating the Dry Run option, where the stylus moves through the entire pattern without actually marking on the part.

- Upload and use any TrueType font (TTF) in your marking patterns
- View the Marking History and Statistics files for detailed history information
- Use the Backup function to quickly save patterns, logos, fonts, and history files
- Operate the system in any of the installed languages, or install new languages
- 8 MB internal flash memory stores eight marking patterns
- Create custom fonts with the optional *Font Creator* software



**ADP2560**  
25mm x 60mm  
marking window



**ADP5090**  
50mm x 90mm marking window



**ADP120160**  
120mm x 160mm marking window

## PANNIER CORPORATION

207 Sandusky Street • Pittsburgh PA 15212-5823 USA  
412-323-4900 tel • 412-323-4962 fax • sales@pannier.com • www.pannier.com