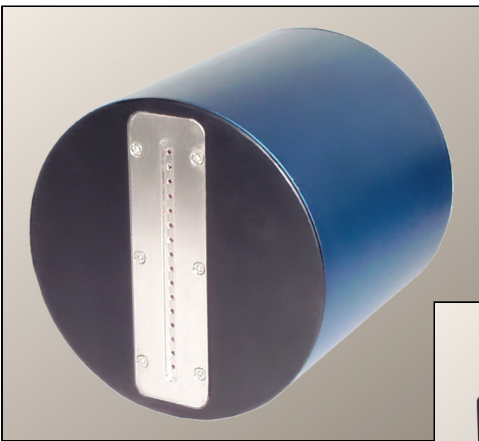
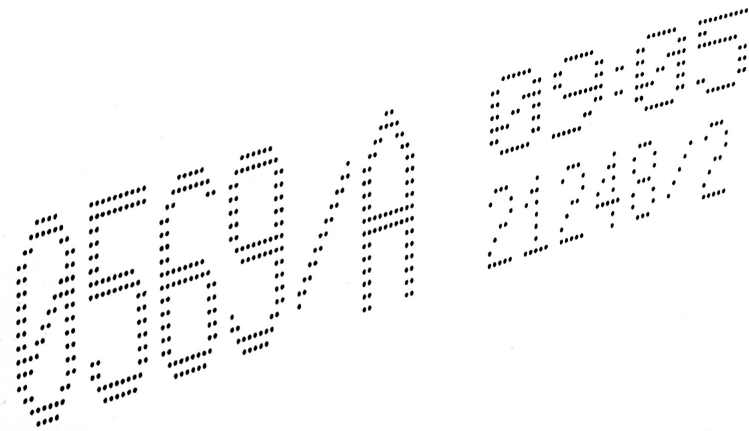




REA-JET LC INK JET PRINTER

PRINTING



- Corrugated Cartons*
- Extruded Plastics*
- Fabric & Textiles*
- Lumber Products*
- Metal Plate & Strip*
- Pipe & Tube*
- Shrink-wrapped Products*

Simple and affordable ink jet coding.

The REA-JET LC model is a reliable, low-cost ink jet printer designed for simple marking applications on industrial products and packaging. To quickly and economically implement ink jet printing capabilities on your production line, the LC is the ideal choice for today's manufacturer. This stand-alone system is ideal for marking part numbers, lot numbers, date codes, serial numbers, and customer information on porous and non-porous materials.

If you are starting up a new line or if you are printing for the first time, the LC will allow you meet your marking requirements quickly and easily. Its low-maintenance design means it will operate reliably while enabling you to increase the productivity of your manufacturing operations.

SPECIFICATIONS

| | |
|---------------------------|---|
| Character Sizes | ¼" to 2½", bold characters, adjustable width and spacing |
| Print Matrix | 5x5; 7x5; 10x10; 16x10 |
| Lines of Text | 7-dot head: 1 line 16-dot head: 2 lines |
| Printheads per Controller | 7-dot: 2 heads/1 controller 16-dot: 1 heads/1 controller |
| Message Length | 256 characters per message |
| Message Storage | 100 messages |
| Line Speed | 2 fpm to 850 fpm |
| Mounting Configurations | top, bottom, or side mounting |

LOW COST

The LC system keeps your annual consumable costs low compared to other types of printing systems:

- Do away with the messy die changes of contact printers
- Does not required make-up fluid like continuous ink jet (CIJ) printers
- Consumes 20% to 30% less ink than other drop-on-demand (DOD) ink jet systems

QUICK SET-UP

For basic printing jobs, setup is as easy as 1-2-3!

1. Assemble the components on your line.
2. Program messages with the input terminal.
3. Pour ink into the reservoir and start printing.

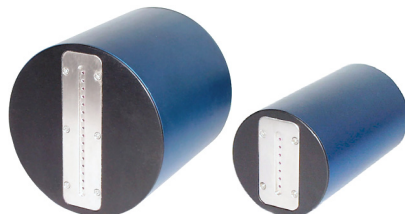
LOW MAINTENANCE

The LC's patented, IP65 rated printhead virtually eliminates clean-up and maintenance time because of its nearly clog-free design. The basic maintenance procedure is to wipe the face plate clean at the end of each shift.

If any component needs attention, the modules can be removed and replaced in a matter of minutes. This philosophy of design for "replacement not repair" ensures that the printer is operational in the shortest period of time.

PRINTING OPTIONS

Message orientation can be normal, upside-down, forwards, and backwards. Choose from several fonts and sizes and store up to 100 messages for fast and easy printing. Print real-time information using the internal clock with variable calendar. The unit has a universal counter with variable incrementation, so you can choose up to five-digit incrementing or decrementing numbers for easy product serialization. It can also be programmed to print your logo.



The system can be configured to use one 16-dot head or up to two 7-dot heads.

| | | |
|-----------------------|--|-------------|
| Electrical Supply | 110V; 50/60 Hz | |
| Operating Environment | Temperature: 23°F to 113°F Humidity: 10% - 90% non-condensing | |
| Component Weights | Controller | 5.5 lbs. |
| | Ink Supply (2 liter) | 4.5 lbs. |
| | 7-dot Print Head | 1 lb. |
| | 16-dot Print Head | 2.5 lbs. |
| Ink Types | Curable | MEK |
| | Ethyl Acetate | Pigmented |
| | Ethyl Alcohol | Water-based |
| | Isopropyl Alcohol | Custom |

ADVANTAGES OF USING THE LC IN THE MANUFACTURING ENVIRONMENT

In terms of affordability, ease of use and required maintenance, the LC is a more sensible alternative to continuous ink jet (CIJ) systems or old-fashioned contact printers. See how it compares:

| Feature | REA-JET LC | CIJ Printer | Contact Printer |
|---------------------------|----------------|-----------------------------------|----------------------|
| Programmable | Yes | Yes | No |
| Message Changing | Input terminal | Input terminal or external device | Manual die changes |
| Printheads per Controller | One or Two | One | One |
| Typical Maintenance | Minimal | Frequent | Moderate to Frequent |
| Equipment Cost | Medium | High | Low |
| Annual Consumable Costs | Low | Moderate to high | Moderate to high |



Controller is available with an integrated or separate input terminal.

OPTIONAL COMPONENTS

- ♦ **Shaft encoders** to maintain accurate printing speed
- ♦ **Photocells** to trigger printing
- ♦ **Stand** to support components
- ♦ **Mounting brackets** for various printhead configurations

PANNIER CORPORATION

207 Sandusky Street • Pittsburgh PA 15212-5823 USA
412-323-4900 tel • 412-323-4962 fax • sales@pannier.com • www.pannier.com