

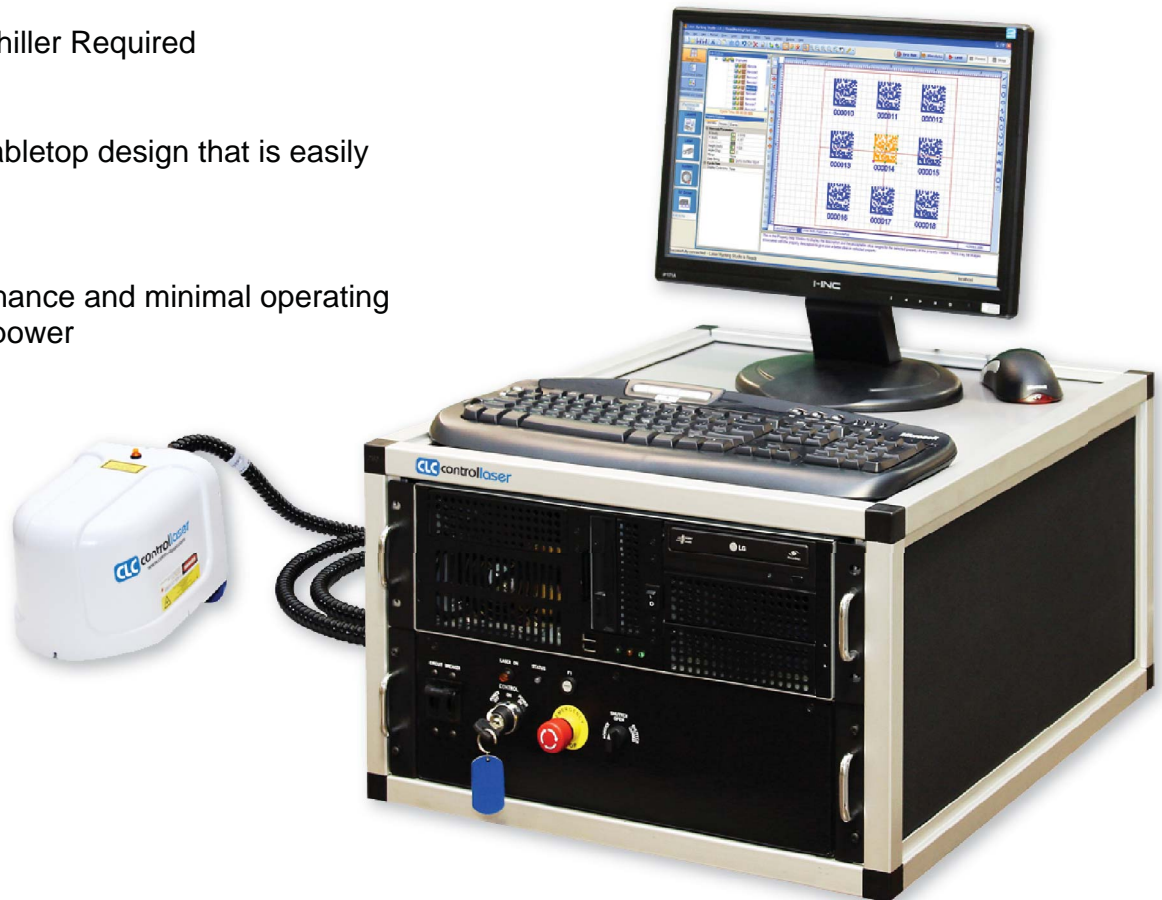
F30

30 WATT | FIBER OPTIC LASER MARKING SYSTEM

The F30 is a compact fiber laser marking system ideal for industrial applications. It features a pulsed 30-watt fiber delivered IR wavelength which can handle lasing a wide range of materials successfully. This system is also equipped with the easiest, most flexible laser marking software in the industry, Laser Marking Studio™.

SYSTEM FEATURES AND BENEFITS

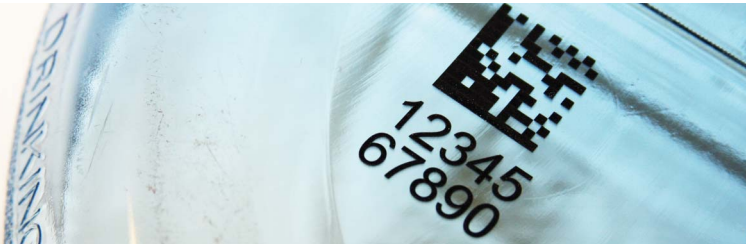
- Air-Cooled, No Chiller Required
- Small Footprint tabletop design that is easily integrated
- Very Low maintenance and minimal operating costs - 115 VAC power



CLC controllaser
30WATT
PEAK LASER POWER

F30

30 WATT | FIBER OPTIC LASER MARKING SYSTEM



LASER SYSTEM

Wavelength: 1070 nm
Mode of Operation: Pulsed
Laser Source: Single Emitter Diodes
Beam Quality: 1.2 (M²) TEM₀₀
Pulse Repetition Rate: 30 kHz - 80 kHz
Maximum Output: 30 watts
Polarization Random
Integrated Red Diode Laser
Laser Safety Shutter

LASER CONTROLLER

Integrated Computer Based Controller
MS Windows® XP Professional OS
Built on Microsoft .NET Framework
USB Interfaces, I/O Interfaces, RS 232
Ethernet Ready

POWER REQUIREMENTS

Standard Voltage: 115 VAC (50Hz/60Hz)
Optional Voltage: 230 VAC (50Hz/60Hz)
Nominal Current Consumption: 7A (typical), 9A (max)

MECHANICAL DIMENSIONS

Control Unit: (19" Rack Mount) - 12.5" (H) x 21" (W) x 26" (D), 90lbs.
Flexible Umbilical Length: 8' standard, 15' optional
Laser Rail and Galvo: 6" (H) x 6.5" (W) x 8.5" (D)

LASER MARKING STUDIO™ SOFTWARE

Customizable User Interface with Graphic File Import
Bar Code Creator & Serial Numbering
True Type Font Support

STANDARD MARKING FIELDS - (others available)

Field Size: 7" (177mm) - Focal Length: 10" (254mm)
Field Size: 9" (228mm) - Focal Length: 13" (330mm)

COOLING

Air Cooled (No Chiller Required)

OPTIONAL FEATURES

Integrated Auto Power Meter
ViewLase Software Add-On
Remote Diagnostics
Various Workstations & Automation

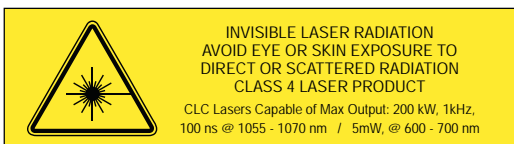
- Rotary, Dial Indexer, X/Y Tables, Auto Z
- Conveyor Systems, Custom Designs
- Tabletop, Manual Load / Unload



For more information on Control Laser products, please contact :

PANNIER CORPORATION

207 Sandusky Street • Pittsburgh, PA 15212-5823 USA
412-323-4900 tel • 412-323-4962 fax • sales@pannier.com
www.pannier.com



Specifications Subject to Change Without Notice
Other Power Levels are Available

CLC-F30-DS-062409-REV D