

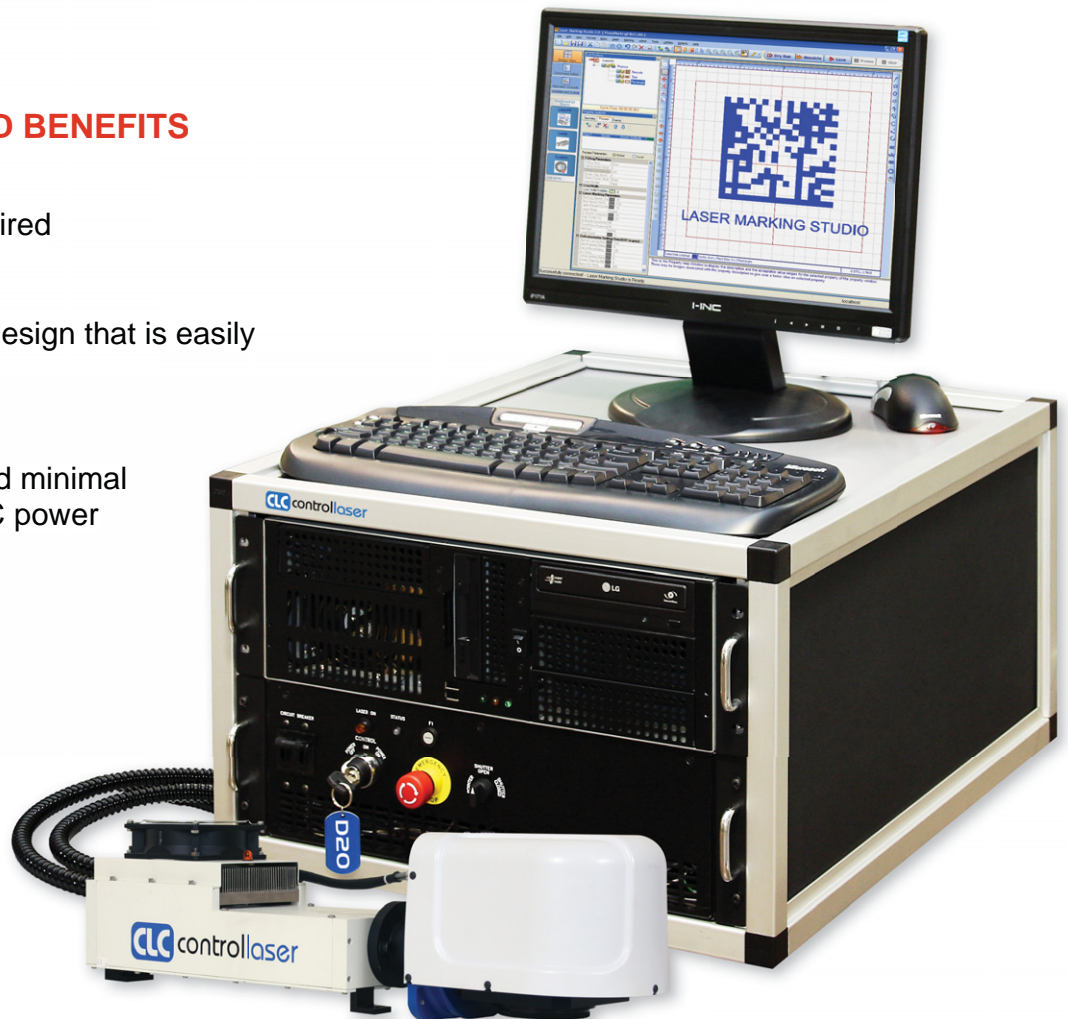
D20

20 WATT | DIODE-PUMPED LASER MARKING SYSTEM

The D20 is a 20-watt Q-switched Nd:YVO₄ (vanadate) diode pumped laser marker. The D20 is ideal for material processing requiring shorter pulse width (typically 20 ns @ 30 kHz). This laser marks a wide variety of materials including metals, composites, ceramics, plastics, painted / anodized metals, and many others.

SYSTEM FEATURES AND BENEFITS

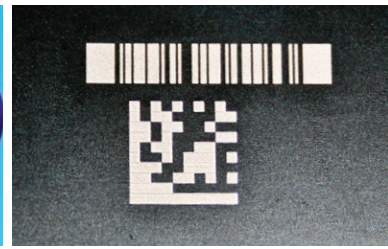
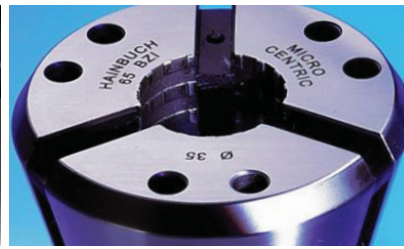
- Air-cooled: no chiller required
- Small-footprint, tabletop design that is easily integrated
- Very low maintenance and minimal operating costs - 115 VAC power



CLC controllaser
20WATT
PEAK LASER POWER

D20

20 WATT | DIODE-PUMPED LASER MARKING SYSTEM



LASER SYSTEM

Wavelength: 1064 nm
Mode of Operation: Q-Switched
Laser Source: Single Emitter Diodes
Beam Quality: Low Order
Pulse Repetition Rate: CW, 13 kHz - 100 kHz
Maximum Output: 20 watts
Polarization: V= >100:1
Diode Life Expectancy: 20,000 - 30,000 hrs
Laser Safety Shutter

LASER CONTROLLER

Integrated Computer Based Controller
MS Windows® XP Professional OS
Built on Microsoft .NET Framework
USB Interfaces, I/O Interfaces, RS 232
Ethernet Ready

POWER REQUIREMENTS

Standard Voltage: 115 VAC (50Hz/60Hz)
Optional Voltage: 230 VAC (50Hz/60Hz)
Nominal Current Consumption: 7A (typical), 9A (max)

MECHANICAL DIMENSIONS

Control Unit: (19" Rack Mount) - 12.5" (H) x 21" (W) x 26" (D), 90lbs.
Flexible Umbilical Length: 8' standard, 15' optional
Laser Rail and Galvo: 7" (H) x 7" (W) x 25" (D)

LASER MARKING STUDIO™ SOFTWARE

Customizable User Interface with Graphic File Import
Bar Code Creator & Serial Numbering
True Type Font Support

STANDARD MARKING FIELDS - (others available)

Field Size: 7" (177mm) - Focal Length: 10" (254mm)
Field Size: 9" (228mm) - Focal Length: 13" (330mm)

COOLING

Forced Air Over Heat Sink (No Chiller Required)

OPTIONAL FEATURES

Integrated Auto Power Meter
ViewLase Software Add-On
Remote Diagnostics
Various Workstations & Automation

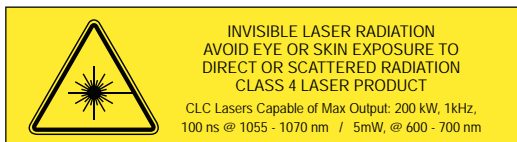
- Rotary, Dial Indexer, X/Y Tables, Auto Z
- Conveyor Systems, Custom Designs
- Tabletop, Manual Load / Unload



For more information on Control Laser products, please contact :

PANNIER CORPORATION

207 Sandusky Street • Pittsburgh, PA 15212-5823 USA
412-323-4900 tel • 412-323-4962 fax • sales@pannier.com
www.pannier.com



* Specifications Subject to Change Without Notice
Other Power Levels are Available

CLC-DE110-DS-062409-REV D