



S SERIES PROGRAMMABLE STAMPERS

INDENTING



- Cylinders*
- Valves*
- Automotive Parts*
- Hardware*
- Nameplates & Tags*
- Electronic Components*
- Dies & Tooling*
- Machine Components*

Part and nameplate marking at an affordable price.

The S Series Programmable Stamper uses micro percussion technology to produce permanent marks on a variety of materials while exerting minimal force on your parts. Micro percussion marking is a non-stressing technique for cold marking on a variety of materials including metals, plastics and wood.

The S Series Programmable Stamper is an economical, bench-top unit suitable for marking almost any part or nameplate. The generous marking area of 5" x 4" meets a large variety of marking needs. Designed for accuracy and reliability, it delivers high quality, permanent marks on a wide range of materials and surfaces. The sliding shutter system, common to all Pannier programmable stampers, protects the stamper from contaminants.

Programming is done through the integrated keyboard with scrolling LCD display. No PC, external controller, or external keyboard is required.

SPECIFICATIONS

Marking Window	5.1" x 3.9" (130mm x 100mm)
Display	2 line, 40 character LCD display
Interface	RS-232 serial port and I/O connection
Languages	English, French, German, Italian, Spanish
Electric Supply	90-260 VAC / 50-60 Hz, 40W
Air Supply	90 PSI maximum, clean and dry
Memory	512 KB maximum (100 marking files)

Head Weight	18 lbs
Head Dimensions	9.7"W x 12.2"T x 9.3"D
Character Height	.06" to maximum of window size
Marking Resolution	250 dpi maximum (.004" to .079" dot spacing in increments of .004")
Surface Irregularity	0.48" (± 0.24")
Fonts	5 standard, 13 optional

The S Series Programmable Stamper can serve a multitude of marking needs in today's machine shop. The stamper is provided as a turnkey marking station, complete with a standard column and base and stylus assembly. The marking head height can be adjusted on the column to accommodate different size parts, and a variety of fixtures can be mounted to the base to hold your parts in place during marking. The stamper can also be mounted on-line as an integrated part of your production process.

Eliminate Hand Stamping

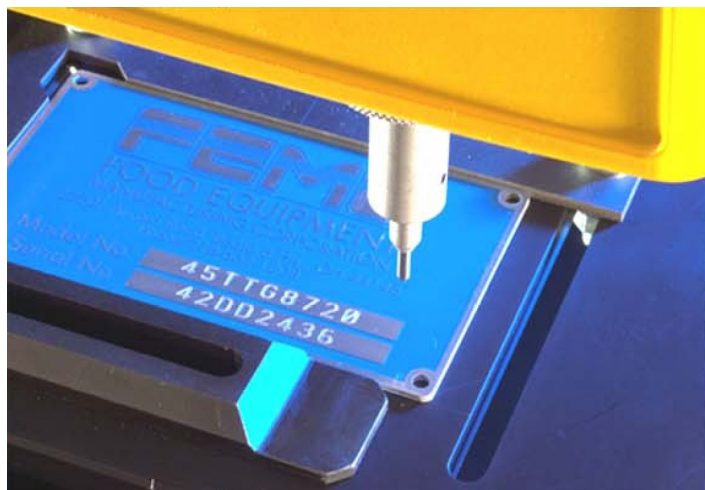
If you're still marking parts, tooling or nameplates in your shop with hand stamps, you can benefit several ways: eliminate injuries and errors, save time, and get consistent marks every time.

Gain Flexibility

The S Stamper pushes the limits of programmable stamping: stamp characters as small as .06", mark parts as hard as 60 HRC, even emboss thin materials with raised marks. Store up to 100 marking files for quick and easy marking file selection.

Excellent Mark Quality

The stamper's independent X and Y axes, high speed electrovalve, and high resolution stepper motors provide precise dot control for the most consistent and high-quality marks possible with a programmable stamper.



Mark nameplates and tags quickly and accurately with an optional nameplate fixture as shown above.

Actual Marking Window Size (130mm x 100mm)

MODEL S1

The basic S1 model is a stand-alone marking station capable of marking text, dates, basic shapes, and automatic serialization. Text options include linear marks in any orientation, reverse characters, and radial marking with adjustable character height, width, spacing and slant.

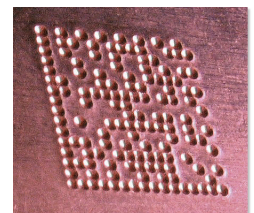
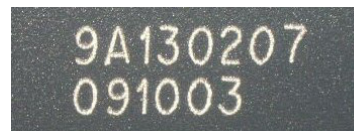
MODEL S5

The S5 model expands on the capabilities of the S1. The included SISIM PC interface software enables you to:

- Download logos (.plt files) into the stamper
- Upload marking files to a PC for archiving
- Store an unlimited amount of marking files on a PC and download to the stamper as needed

OPTIONS

- Bar code reader connection kit for direct input of scanned data
- RS-485 connection and network management program kit for networking up to 32 stampers from one PC
- Reporting function to record parameters of every completed marking job
- Integrator Protocol function that allows creation and modification of marking files through serial communication
- Custom interface programming
- Remote control with start/stop buttons and ready/cycle lights
- 2D Data Matrix marking capability



FIXTURING & SUPPORTS

The S stamper comes complete with a standard column and base suitable for most marking needs. For marking large or irregularly shaped parts, a heavy-duty column and base is also available.

Have a part marking challenge? Pannier has standard fixtures and supports for marking parts of various shapes and sizes. Pannier also designs and manufactures custom fixtures to tackle all your part marking needs.

PANNIER CORPORATION

207 Sandusky Street • Pittsburgh PA 15212-5823 USA
412-323-4900 tel • 412-323-4962 fax • sales@pannier.com • www.pannier.com